



### Standard Features:

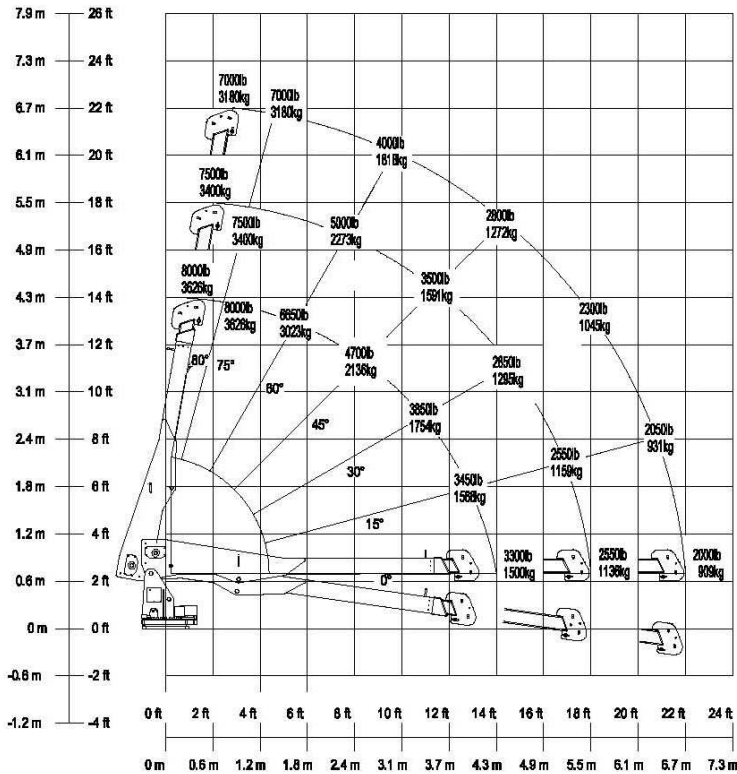
#### Features:

- The LS-0623-HW crane is rated at 6,000 LB maximum lift capacity based upon angle, extension and elevation as listed on the crane load chart.
- The LS-0620-HW crane rated at 40,000 FT LBS.
- Fully hydraulic crane functions – Extend, retract, boom up, boom down, rotate clockwise 370 degrees, rotate counter clockwise 370 degrees, winch up, winch down.
- Pistol grip type wired / wireless fully proportional, feather touch remote crane control, a wired / wireless receiver and wiring harness.
- Heavy duty worm gear winch for improved stability and reliability during lifting operations.
- Heavy duty worm gear rotation drive gear box provides improved stability and overall reliability when lifting and rotating loads.
- Heavy duty, pilot operated lift cylinder.
- Heavy duty, pilot operated extend cylinder.
- Features a 3/8 Inch diameter aircraft grade crane cable.
- Heavy duty, construction grade, proportionally controlled valve bank assembly.
- Crane pins designed to accept grease via machined grease grooves.
- Severe duty, internal composite crane boom slides with grease ports reduce long term damage from extend boom metal to metal contact with main boom assembly.
- Features heavy duty cast nylon sheaves for reduced cable wear and long sheave life.

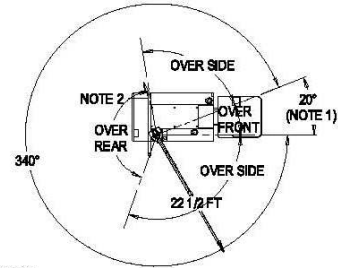
#### Specifications:

- Meets OSHA 1910.180 Crane Standard
- Meets ANSI B30.5 Crane Standard
- Weight: 1600 lbs.
- Stowed Dimension: 24" Wide, 36" High, 13'4" Long (61 cm Wide, 91 cm High, 406 cm Long)
- Base Plate Dimensions: 20-1/2" X 23-1/2" (52 cm X 60 cm)
- Horizontal Reach: 12" (3.7 m) to 20' (6.1 m) with 8' ft (2.4 m) hydraulic extension boom.
- Vertical Reach: -2'0" to 22'0" (-.06 m to 6.7 m)
- Cable Reach at Maximum Extension:
  - Single Line: 70'0" (21.3 m)
  - Double Line: 34'0" (10.4 m)
- Boom Elevation: -15 Deg to 80 Deg.
- Rotation: 370 Degrees
- Cable: 95'0" Long (29 m), 3/8" (0.95 cm) IWRC cable, 4000 lb. (1814 kg) single line pull.
- Winch Speed: 15-24 ft./min. (4.6-7.3 m/min) single line pull, 7-1/2 - 12 ft/min (2.3 - 3.6 m/min) double line pull.
- Wired/Wireless remote crane control system with proportionally controlled, feather touch trigger operated hand held remote transmitter featuring tethered or wireless operation, wireless remote receiver with tether connector port, crane wiring harness, remote engine start/stop and engine idle up/down feature (based on chassis capability), optional auxiliary start/stop feature, 25 ft. wired control cord and one 12V battery charger (cigarette lighter type) to charge the hand held transmitter.

### LS-0623-HW CRANE LOAD RATINGS MEETS OSHA 1910.180 STANDARDS & ANSI B030.5 SAFETY STANDARDS



### WORK AREA CHART



**NOTES:**

1. AVOID SWINGING LOADS THROUGH THIS AREA. VEHICLE LENGTH MAY PROHIBIT ANY LOAD HANDLING IN THIS AREA. IF LOADS ARE TO BE HANDLED, PAY SPECIAL ATTENTION WHEN SWINGING ACROSS THE FRONT OF THE VEHICLE, AS LOAD CONTACT WITH THE VEHICLE MAY OCCUR.

2. THESE LINES DETERMINE THE LIMITING POSITION OF ANY LOAD FOR OPERATION WITHIN THE INDICATED WORK AREAS

**NOTES:**

- ALL LOADS ABOVE 4000 LBS. MUST BE LIFTED USING A TWO-LINE PULL.
- WEIGHT OF LOAD LIFTING DEVICES MUST BE SUBTRACTED FROM THE LISTED LOAD RATINGS.
- INSPECT VEHICLE AND CRANE INCLUDING OPERATION, PRIOR TO USE DAILY.
- DO NOT USE THIS EQUIPMENT EXCEPT ON SOLID, LEVEL SURFACE WITH OUTRIGGERS PROPERLY EXTENDED AND CRANE MOUNTED ON A FACTORY-RECOMMENDED TRUCK. (CONSULT OPERATOR'S MANUAL FOR SPECIFICATIONS)
- OPERATE ALL CONTROLS SLOW AND SMOOTH TO AVOID DAMAGE TO CRANE OR INJURY TO PERSONNEL.
- DO NOT OPERATE, WALK OR STAND BENEATH BOOM OR A SUSPENDED LOAD.
- FOR TRAVEL, BOOM MUST BE IN A STOWED POSITION.

103707-LS-0620-HW



Crane Control Transmitter

### Authorized Dealer:



Crane Control Receiver